

SOLVE 

INDUSTRIAL MOTION GROUP

UNITED WE DRIVE

OUR BRANDS



At Solve Industrial Motion Group, we believe that “United We Drive.”

Our family of brands have over 100 years of combined experience. Evolving over time, the integrated companies bring deep technical expertise, commitment to serving customers, and a legacy of reliability. Together, Solve Industrial Motion Group focuses on solving real-world industrial motion challenges.

What Sets Solve Apart

- » Portfolio of best-in-class, specialized brands
- » Suite of bearing and drive solutions under one organization
- » True full drive solutions approach—fewer vendors, better integration
- » Driven by engineering excellence and manufacturing expertise
- » Defined by strong commercial relationships and trusted partnerships
- » Fast, responsive, and easy to do business with
- » Scalable solutions for distributors and manufacturers
- » Outperforms competitors, without sacrificing service or expertise

Across our portfolio, we deliver a comprehensive range of bearing and drive solutions. Solve offers a robust bearing family: mounted and unmounted, roller and ball, and many specialized offerings. Within power transmission we provide the full drive solution with v-belts and sheaves, chain & sprocket, and synchronous systems.

Solve is more than a component provider; we are a one-stop source that integrates components into system solutions. Combining the strongest best in the most critical categories, we are driven to build stronger, more capable industries together.

| DRIVE SOLUTIONS |

Solve offers a true full drive solution, including:

- Pulleys
- Sheaves
- Couplings
- Chains
- Belts
- Sprockets

 6

 8

 10

 12

| BEARING SOLUTIONS |

Solve offers a wide variety of bearing solutions, including:


- Bearings
- Housings
- Ball
- Metric
- Belts
- Specialty
- Miniature Precision
- Materials Handling
- Conveyors

IPTCI 14

PTI 16

TRITAN 18

SPB-USA 20

 22

 24



B&B Manufacturing

B&B Manufacturing is Solve and North America's largest synchronous drive pulley manufacturer and a trusted provider of precision power transmission components for distributors and OEMs across industries. With their state-of-the-art facilities in the USA, and machining expertise, B&B delivers standard, custom, and prototype solutions, from V-belt sheaves and sprockets to plastic powerdrives built for durability and performance.

Product Line

- Synchronous Belts
- V-Belt Sheaves
- Taper Bushings (QD, Taper Lock, Double Split Taper Bushings)
- Roller Chain Sprockets
- Spur Gears
- Idler Sprockets, Bushings, and Pulleys





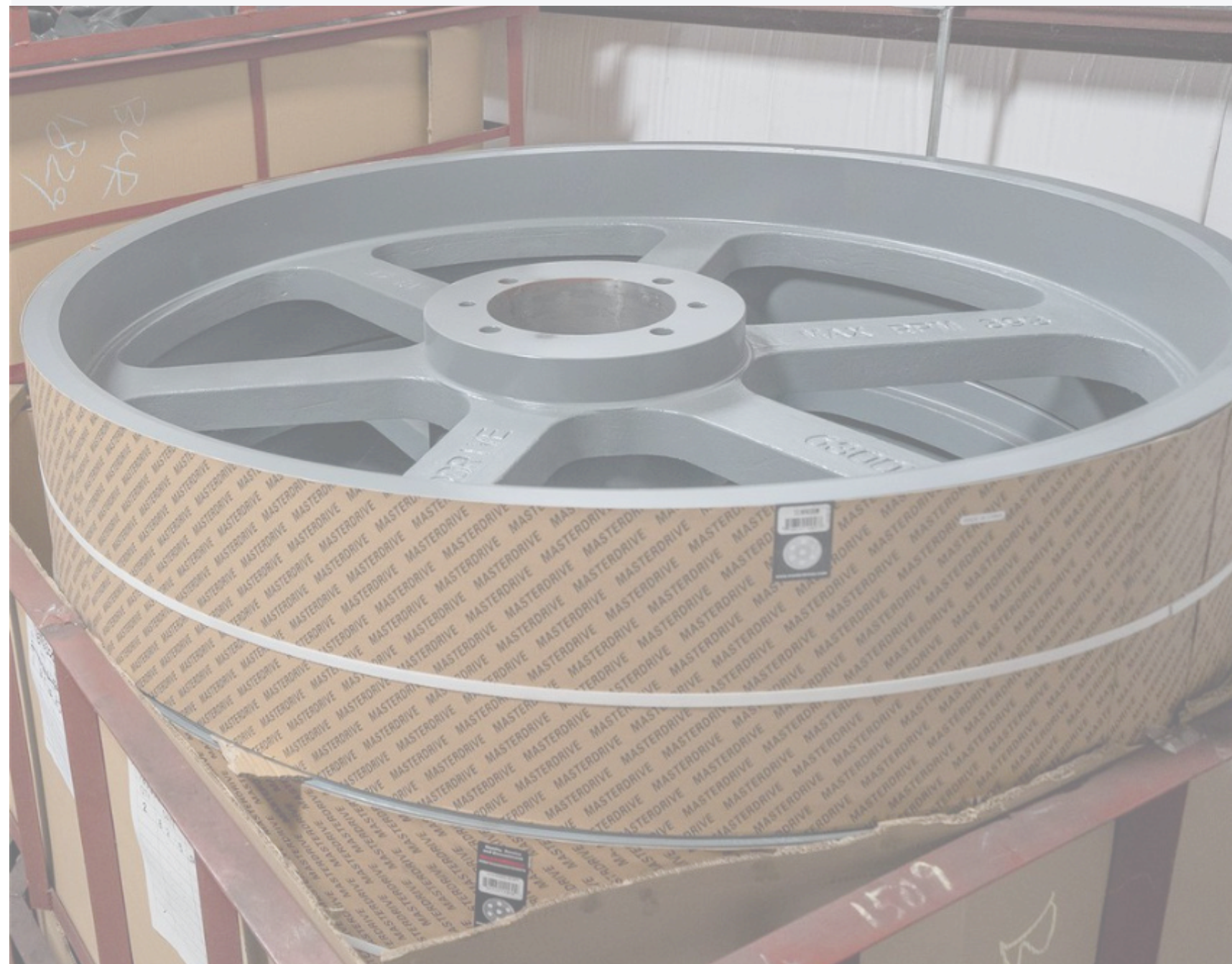
Masterdrive

Masterdrive is a trusted brand in the power transmission market, built around a simple promise: deliver reliable, dependable, and comprehensive solutions without the premium price tag. Known for exceptional product quality and customer service, Masterdrive offers customers confidence in every component they choose. With strong availability and a broad selection, Masterdrive makes it easy for distributors and end users alike to find the right products when they need them.

At the core of the Masterdrive lineup are high-quality sheaves and shaft couplings, supported by a complete offering of bushings, V-belts, and synchronous drive products. This focused yet comprehensive approach allows Masterdrive to deliver consistent performance across a wide range of applications while maintaining excellent value. For customers who demand dependable power transmission components, responsive support, and smart cost control, Masterdrive delivers the performance you expect.

Product Line

- Sheaves
- Bushings
- Shaft Couplings
- V-Belts
- Synchronous Drives





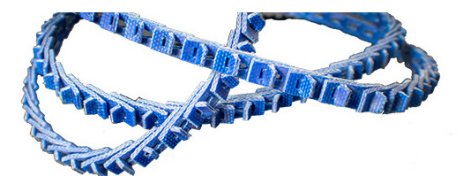
D&D Global

D&D is Solve’s premier power drive belt manufacturer, engineered for performance across virtually every industry. From standard applications to highly specialized use cases, D&D belts are built to deliver consistent power, long service life, and dependable results in demanding environments where downtime is not an option.

What truly sets D&D apart is total control over the manufacturing process. D&D is the only industry brand that owns and manages every step—from rubber tree plantations and proprietary belt molds to in-house cord and fabric production and custom chemical compound mixing. This vertically integrated approach eliminates third-party sourcing, reduces variability, keeps costs affordable and ensures uncompromising quality in every belt that leaves the factory.

Product Line

- V-Belts
- Timing Belts
- Banded Belts
- Linked Belts
- Specialty Belts





Power Rite Products

Power Rite Products (PRP) supplies premium, cost-effective chain components including roller chains, cut to length chains and engineered chains. Backed by strong engineering expertise and high quality standards, PRP delivers dependable products designed to perform across a wide range of industrial applications.

What sets PRP apart is its customer-first approach. Acting as an extension of customers' sourcing teams, PRP combines competitive pricing, responsive service, and reliable product support to deliver efficient, innovative solutions—whether for standard components or custom projects.

Product Line

- Roller Chain
- Cut-to-Length Chain
- Engineered Chain





IPTCI

This market-leading portfolio of high-performance mounted ball bearings are designed for corrosion-resistant and wash-down environments. IPTCI products are engineered to deliver precision, reliability, and long-lasting performance in industries where harsh conditions—like frequent cleaning, chemicals, moisture, and dust—are part of daily operations.

From standard duty to medium duty pillow blocks, flange units, take-ups, and insert bearings, IPTCI offers a comprehensive range of purpose-built solutions that help keep equipment running smoothly and efficiently.

IPTCI mounted bearings combine quality, durability, and dependable performance to meet the exacting requirements of modern industrial applications.





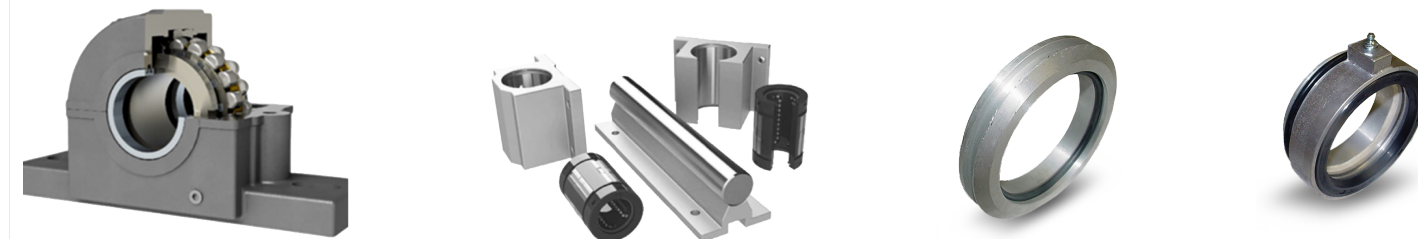
PTI

PTI delivers a wide spectrum of high-quality metric bearings designed to meet the demands of modern industrial applications. PTI is well known for their specialization in roller bearings, split housings, and accessories; a full range of components engineered for robust, heavy duty performance.

PTI's heavy-duty, dependable products are built to perform in demanding environments without the premium pricing often associated with comparable offerings. By combining a broad, metric-ready product line with consistent quality at a fair price, PTI helps customers simplify sourcing while maintaining confidence in the strength and longevity of their power transmission systems.

Product Line

- Split Blocks and Accessories
- Mounted Ball Bearings: Standard Duty and Corrosion-Resistant
- Metric PT Components





Tritan

Tritan is a trusted manufacturer of ball and roller bearings, with over 25 years of experience supporting demanding industrial applications. Manufactured from heat-treated select alloy steel and produced using advanced quality control and testing systems, Tritan products are engineered for reliable performance, long life, and consistent quality across a comprehensive product offering.

By leveraging the latest manufacturing technologies and careful adherence to lubrication requirements, Tritan increases bearing life expectancy while reducing total cost of ownership. Backed by deep inventory, rapid delivery, and strong distributor support, Tritan delivers dependable, world-class components that balance performance, availability, and value.

Product Line

- Radial Ball Bearings
- Mounted Ball Bearings
- Thrust Ball Bearings
- Angular Contact Ball Bearings
- Spherical Roller Bearings
- Needle Roller Bearings
- Tapered Roller Bearings





SPB-USA

SPB-USA provides OEMs and industrial distributors across North and South America with direct access to world-class miniature and medium-size bearing solutions. This direct relationship ensures consistent quality, responsive support, and reliable supply—making it easy for customers to specify precision bearings with confidence.

SPB-USA is best known for its EZO Bearings, a comprehensive range of miniature precision ball bearings spanning bore diameters from 0.6 mm to 90 mm. Manufactured to exacting standards and backed by ISO 9000, ISO 9001, and ISO 14001 certifications, EZO Bearings deliver exceptional accuracy, durability, and performance. For applications where precision truly matters, SPB-USA offers proven solutions backed by global manufacturing excellence.

Product Line

- Miniature Precision Bearings





Miller Bearing Company

Miller Bearing Company, Inc. is a U.S.-based manufacturer specializing exclusively in conveyor bearings since 1978. As a domestic producer of flanged conveyor bearings, Miller has built its reputation on focus, consistency, and deep expertise—bearings are not just part of their business, they are their only product. This singular focus allows Miller to deliver a complete line of commercial-grade, semi-precision, and ABEC precision bearings designed specifically for the demands of conveyor applications across a wide range of industries.

Using interchangeable, common components, Miller provides customizable conveyor bearing solutions without the long lead times and supply-chain uncertainty associated with imported products. The result is faster turnaround, dependable performance, and a responsive manufacturing partner that understands conveyor systems inside and out.

Product Line

- Conveyor Bearings
FR series semi-precision available in both carbon steel and stainless steel.
PFR ABEC precision series for higher speed applications.





USA Rollers

USA Rollers is a U.S.-based manufacturer specializing in conveyor rollers and components that support the material handling industry. True to its name, USA Rollers proudly fabricates custom gravity rollers, conveyor components, tapers, and pulleys domestically—delivering consistent quality, reliable lead times, and products built for real-world conveyor applications across warehouses, distribution centers, and manufacturing environments.

The company works directly with customers on specialty and smaller-volume orders, offering a level of customization many manufacturers can't match. Their ABEC-rated rollers are engineered for quieter, smoother operation and feature plastic encapsulation to help dissipate static charge—improving performance and system reliability.

Product Line

- Straight Rollers
- Tapered Rollers
- Grooved Rollers





Centers of Excellence



Fulfillment Center of Excellence

Solve's state-of-the-art facility covers 282,134 square feet and houses the company's headquarters and distribution operations.

Located in Charlotte, NC, it expands our engineering and quality control capabilities, while offering flexible shipping and receiving areas, and dedicated stations for product customization.

Manufacturing Center of Excellence

Solve is committed to delivering precision, quality, and reliability across all of our machining capabilities. Located in La Porte, IN, our state-of-the-art facilities allow our skilled team to produce a wide range of custom and standard products, tailored to meet the needs of various industries, including:

- CNC Machining
- Gear Cutting
- Welding
- Material Handling
- Sprocket Manufacturing
- V-Belt Sheave Manufacturing
- Wire EDM
- Dynamic Balancing
- Heat Treating
- Quality Assurance



"Our mission is simple: deliver innovative solutions, unmatched expertise, and products you can trust. Every bearing and drive component we offer is backed by our promise to be a full-solution provider."

SOLVE [®]
INDUSTRIAL MOTION GROUP

© 2026 Solve Industrial Motion Group