

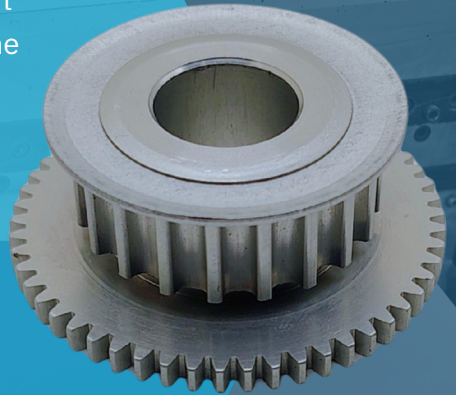
CHALLENGE

A printing customer was dealing with persistent wobble, vibration, and poor print quality caused by a press-fit, two-piece pulley. The imbalance caused significant TIR (Total Indicator Runout), which disrupted their equipment, slowed production, and required frequent operator intervention to keep the line running.



SOLUTION

B&B Manufacturing engineered a true one-piece construction pulley to eliminate the alignment variability inherent in press-fit designs. Manufactured in house by using advanced machining methods—hobbing for precise tooth profiles, shaper cutting for complex geometries, and 360° roll-formed flanges for full-contact stability.



THE RESULT:

- TIR-related wobble eliminated
- Smooth, stable machine operation restored
- Reduced vibration + improved print quality
- Increased reliability in continuous production

SOLVE 
INDUSTRIAL MOTION GROUP

Solve Industrial Motion Group,
Your Trusted Partner for Engineered
Bearings and Power Transmission Solutions.

www.solveindustrial.com